

# red kite

IMPORTANT! READ CAREFULLY AND  
KEEP FOR FUTURE REFERENCE

Instruction leaflet

Feed Me  
Kombo



EN 14988: 2017 + A2: 2024. EN 17191: 2021.

Highchair and Lo Chair mode: Intended for children who are able to sit up unaided and up to 3 years or a maximum weight of 15 kg.

Infant Chair mode: Suitable for children aged from 1 to 6 years of age or a maximum weight of 25 kg.

Customer Care: [www.redkitebaby.co.uk](http://www.redkitebaby.co.uk)

# Parts List

 ① Seat	 ② Tray	 ③ Footrest	 ④ Short legs x 4	 ⑤ Long legs x 4
 ⑥ Feet protector x 4	 ⑦ Bolts x 4, Washer x 4, Allen Key x 1	 ⑧ Harness and seat pad		

# Modes and age / weight suitability



Highchair mode

Suitable for children who are able to sit up unaided and up to 3 years of age or a maximum weight of 15 kg.



Lo Chair mode

Suitable for children who are able to sit up unaided and up to 3 years of age or a maximum weight of 15 kg.



Infant Chair mode

Suitable for children aged from 1 to 6 years of age or a maximum weight of 25 kg.

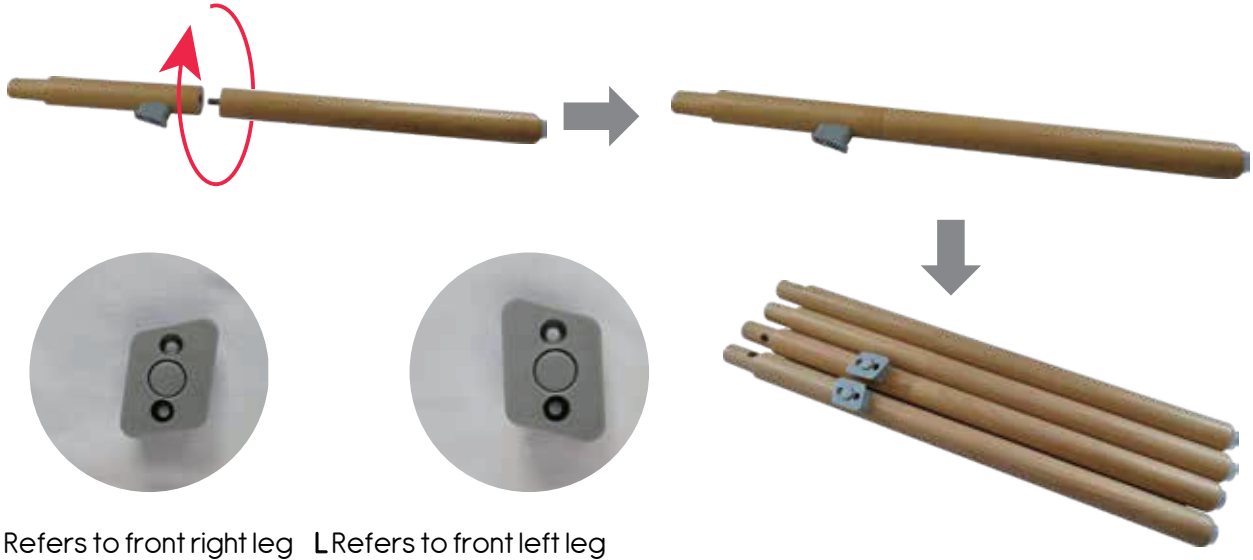


# Highchair mode

---

## Assembly steps for Highchair mode

1. Attach short leg A to long leg A. Repeat this process for the remaining legs. (A+A,B+B,C+C,D+D)



---

2. Line up the holes in the legs with the holes in the seat.  
Place a washer onto the bolt and tighten with the Allen key.

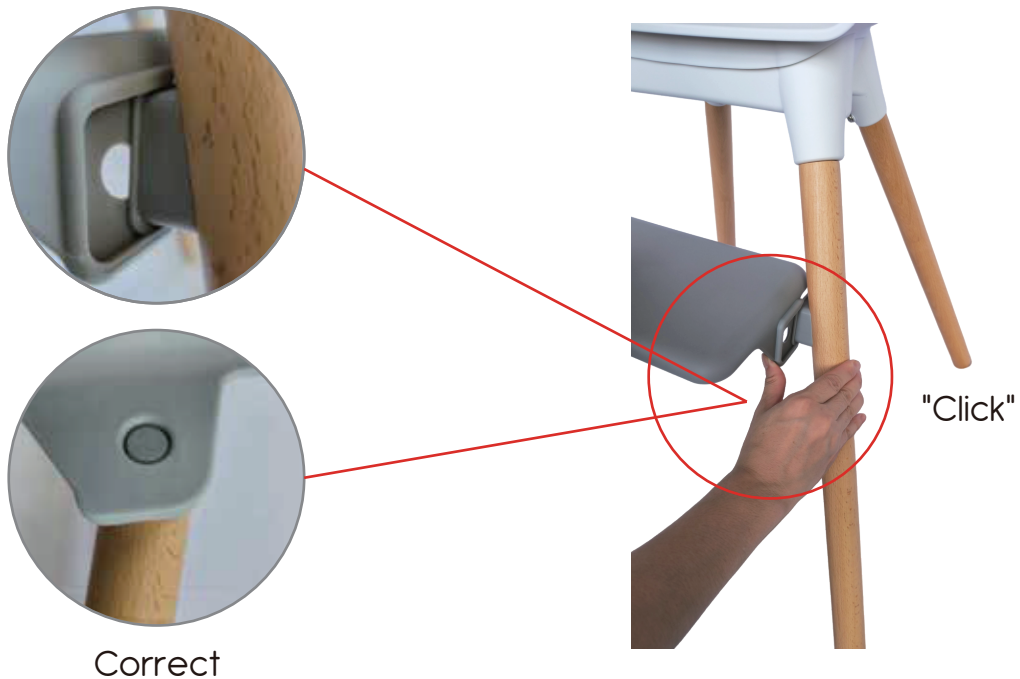


# Highchair mode

---

## To attach the footrest

3. Slide the footrest onto the brackets (on the front legs) from the front of the highchair.



---

## To attach and remove the tray

4. Insert the tray into the holes on the side of the seat.

To remove the tray, pull the edge of the seat and lift the tray out.

### IMPORTANT

Ensure there are no gaps between the edge of the tray and the side of the seat.



# Highchair mode

---

## To assemble the seat pad and harness

5. Pass the ends of the waist and crotch belts through the corresponding slots on the seat. Then, thread the ends of the shoulder strap harness through the opening at the back of the seat and connect the buckles. Pull each strap to make sure they are secure.



---

## To secure and adjust the harness

6. Slide shoulder strap (A) on to waist strap (B) and then push into crotch strap (C) to attach the harness.

Press the button in the centre of the crotch strap (C) to release the harness.

Adjust the waist and shoulder straps by means of the slides to achieve a snug comfortable fit.

### IMPORTANT

Always use the crotch strap in combination with the waist belt.



## Moving to Lo Chair mode

7. Press the button and pull forward to remove the footrest. Remove the long legs. From this point, the Highchair can be adjusted to Lo Chair or Infant Chair.



## Moving to Infant Chair mode

8. Remove the seat pad and harness to complete Infant Chair mode.



# Maintenance, Cleaning and Safety Information

---

## Safety Warnings (High chair and Lo chair mode):

- **WARNING** Never leave the child unattended.
- **WARNING** Always use the restraint system.
- **WARNING** Falling hazard: Prevent your child from climbing on the product.
- **WARNING** Do not use the product unless all components are correctly fitted and adjusted.
- **WARNING** Be aware of the risk of open fires and other sources of heat in the vicinity of the product.
- **WARNING** Be aware of the risk of tilting when your child can push its feet against a table or any other structure.

## Safety Warnings (Infant Chair mode):

- **WARNING** Do not place this product near a window as it can be used as a step by the child and cause the child to fall out of the window.
- **WARNING** Be aware of the risk of open fires and other sources of strong heat in the vicinity of the product.
- **WARNING** Do not place this product near a window where cords from blinds or curtains could strangle a child.

## General Care:

To ensure the best performance and safety of your product, please follow these care guidelines:

- **Suitability:** Do not use the product until the child can sit up unaided.
- **Storage:** Always keep the product in a dry place to prevent mould or mildew.
- **Sunlight:** Avoid prolonged exposure to direct sunlight to protect against fading colours.
- **Safety:** Please do not allow your child to climb on the product to prevent falls. Be mindful of tilting if your child pushes against nearby furniture.
- **Usage:** Keep children at a safe distance when folding, unfolding, or storing the product to prevent injuries.
- **Harness:** Always use the provided 5-point harness. Make sure it is properly fitted and adjusted before each use. (Highchair and Lo chair mode).
- **Assembly:** Adult assembly is required. Double check that the product is assembled correctly and that all locking devices are engaged before placing your child in it.
- **Clear Area:** Ensure all parts of your child's body are clear of the product when assembling, folding, or making adjustments.
- **Not a Toy:** Please do not allow other children to play with the product; it is not a toy. Store it safely out of reach when not in use.
- **Handling:** Never carry the product with your child inside. Always lift your child in and out. Do not let them stand on the footrest or seat or climb in and out on their own.
- **Surface:** Only use the product on a level floor surface.
- **Accessories:** Avoid adding any accessories or fittings that are not approved by the manufacturer.

## Cleaning:

- **Metal Parts:** Wipe with a damp cloth and dry with a soft cloth.
- **Harness:** Clean with a mild soap and water solution, then rinse and dry.
- **Plastic Parts:** Use a mild soap and water solution; rinse and dry thoroughly.
- **Caution:** Do not use abrasive cleaners or bleach. The tray is not dishwasher safe.

## Maintenance:

- **Inspect Regularly:** Do not use the product if any part is broken, torn or missing.
- **Tightness:** Regularly inspect all studs, nuts, and screws for tightness, and ensure that all straps and harness points are in good condition.
- **Replacement Parts:** Only use replacement parts approved by the manufacturer. Using unapproved parts may void your warranty.

Thank you for choosing a Red Kite product. Your child's safety and your satisfaction are our top priorities.

**Manufactured By:** The Red Kite Baby Co Ltd. 35 Lavenham Road, Beeches Industrial Estate, Yate, Bristol, BS37 5QX. UK.

**Authorised Representative:** Mum n Me. Triq is-Suq, Zejtun, ZTN1420. Malta.