



Push Me Sprint

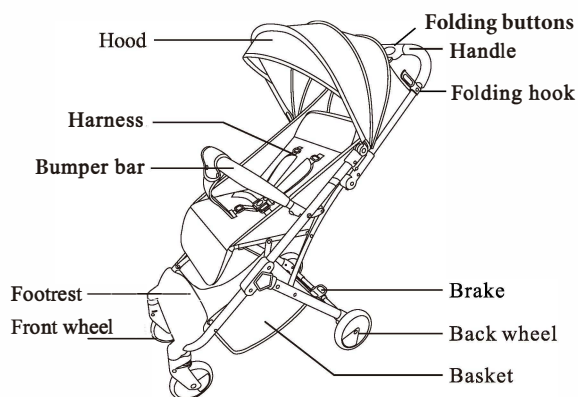
IMPORTANT

Read these instructions carefully before use and keep them for future reference.

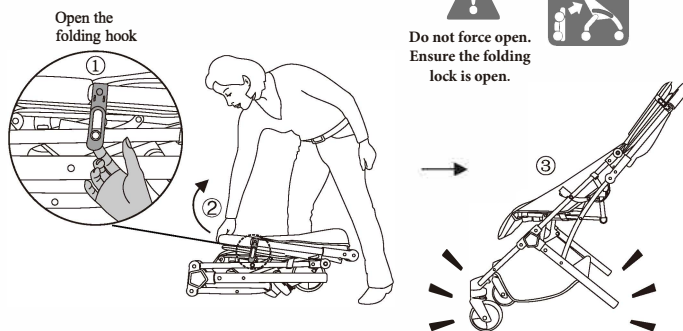
Your child's safety may be affected if you do not follow these instructions.

This vehicle is intended for children from birth up to a maximum weight of 15kgs. Complies with BS

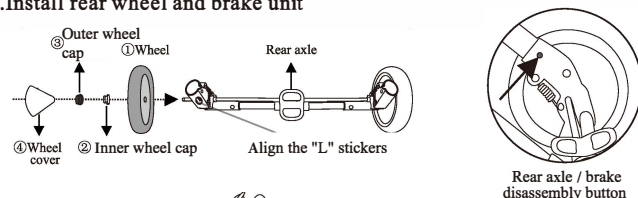
EN 1888 : 2012 Customer Care Line: 01454 326 568



1. Open the frame

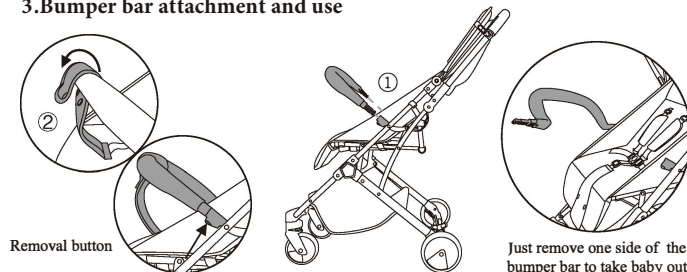


2. Install rear wheel and brake unit

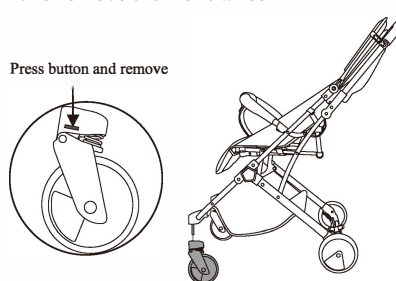


Notice: There is a sticker showing the letter "L"

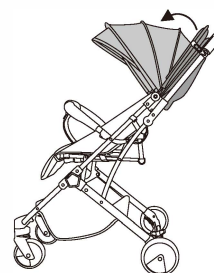
3. Bumper bar attachment and use



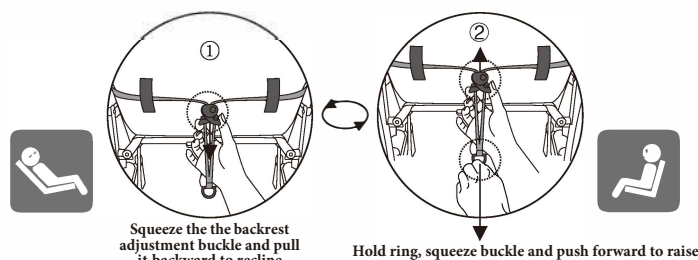
4. To remove the front wheel



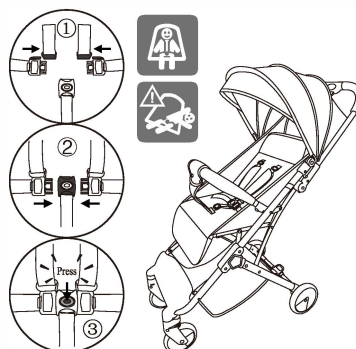
5. To adjust the hood



6. Adjust backrest



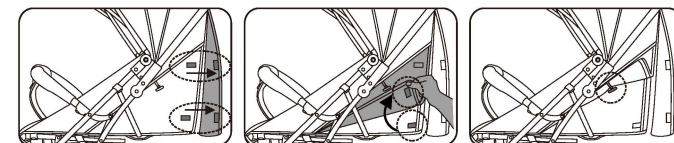
7. Use of safety harness



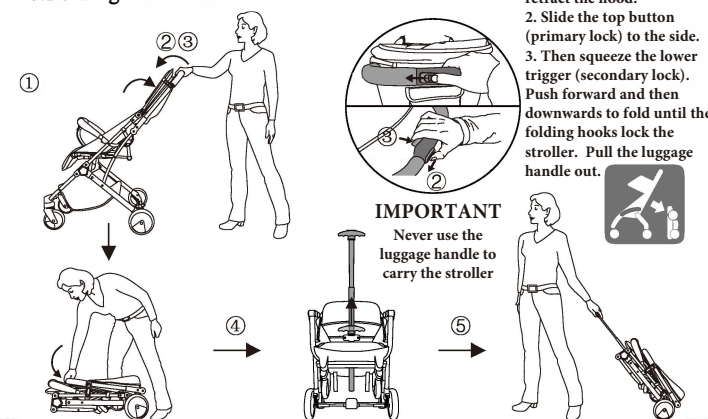
Safety Information:

- The brake must always be engaged when placing and removing children from the stroller.
- Any load attached to the handle and/or on the backrest and/or on the sides of the vehicle will affect the stability of the stroller.
- Lift a child in and out of the stroller. Do not allow a child to stand on the footrest or seat.
- Do not use accessories that have not been approved by the manufacturer.
- Never use the buggy to carry a child up and down stairs or escalators. Remove your child and fold the pushchair when going up or down stairs / escalators.
- For newborns, it is advisable to use the seat unit in the fully reclined position.
- Not intended for children weighing more than 15kgs. This stroller is designed for one child only.

This product complies with BS EN 1888 : 2012
For all technical queries please call: 01454 326 568
Imported by:
The Red Kite Baby Co Ltd. 35 Lavenham Road, Beeches Industrial Estate, Yate, Bristol, BS37 5QX



10. Folding the frame



IMPORTANT

Never use the luggage handle to carry the stroller

General Care:

- The correct use and maintenance of this stroller is essential.
- Do not use excessive force when folding the stroller.
- If you are having problems, fully open the stroller and repeat the folding procedure.
- Always let wheels down as gently as possible when mounting and dismounting kerbs.
- Always fold the stroller when going up or down stairs.
- Never bump the stroller over these or similar obstacles.
- In some climates mould and mildew can affect the fabric and raincover. To avoid this, do not fold the stroller when it is wet. Leave it open in a ventilated area until completely dry.
- Always store the stroller in a dry place.
- When storing the stroller in the car, never place other items on top of it.
- Do not exceed the maximum load of 2 kgs in the shopping basket. (Where provided).

Cleaning:

- Fabric covers and trims may be spot washed using mild detergent and warm water. Leave to dry in a ventilated area away from direct sunlight.
- Avoid leaving your buggy in direct sunlight for prolonged periods of time as this may cause fabrics to fade.
- Do not dry clean, machine wash or tumble dry.
- Metal parts may be cleaned with a damp cloth.
- Always wipe dry. Clean plastic parts with a mild soap and water solution, wipe dry.

Maintenance:

- Maintain your stroller by lubricating all metal moving parts with a silicone based lubricant. Do not use heavy machine oil or grease as this can attract dirt or grit.
- Check that nothing is loose or broken and that no sharp edges have been exposed. Inspect all joints and the harness, replace any damaged parts immediately.
- Inspect any nuts and bolts regularly to ensure none have worked loose. Tighten as necessary.
- Only use replacement parts and accessories that have been approved by the manufacturer. Failure to do this may invalidate your warranty.

Safety Warnings:

- WARNING:** Never leave your child unattended.
- WARNING:** To avoid injury ensure your child is kept away when unfolding and folding this product.
- WARNING:** Do not let your child play with this product.
- WARNING:** Always use the restraint system.
- WARNING:** This product is not suitable for running or skating.
- WARNING:** Your child's safety is your responsibility.
- WARNING:** Any load attached to the handle affects the stability of the pram / pushchair.
- WARNING:** Ensure that all the locking devices are engaged before use.